

INO BELT ACCESSORIES

Total Solutions for
Industrial Automation



ENDLESS CONNECTIONS

Welded connections & plastic spiral fasteners

INO process and conveyor belts are either endlessly welded or mechanically connected.

Moreover plastic spiral fasteners may be used for all types.



Finger connection



Overlapped finger connection



Overlapped connection



Skived connection

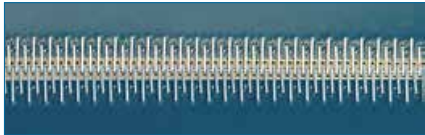
	Finger Connection			Finger Connection (angled)	Finger over Finger connection
Angle	90°	90°	90°	30°	90°
Length of joint	50 mm	80 mm	100 mm	100 mm	100 mm
Length of fingers	50 mm	80 mm	100 mm	80 mm	50 mm
Width of fingers	10 mm	10 mm	10 mm	10 mm	20 mm
Belt types	1 ply PVC, PU and Polyolefin below 2.0 mm	PU, Polyolefin, Hytrel and Silicon below 2.0 mm, PU Printing blanket and PVK	PU Prepress Belt	PU food grade belts over small pulley and knife edge belts	2 ply and above PVC, PU, Hytrel, Polyolefin and Silicon

	Overlapped connection	
Length of joint	100 mm	150 mm
Angle	80°	80°
Belt types	2 ply with thickness above 2.5 mm PCV, PU, Hytrel and Polyolefin, Novo felts, Rubber belts (HSW-3SR)	Belts above 8 mm thickness, Marble Polishing Belts (PGD), PU recycling belts, Rubber HSW-5SR

Mechanical connections

For applications that permit neither the installation of an endless belt nor welding within the plant,

INO process and conveyor belts can be equipped with mechanical fasteners.



Hooks with round design



Hooks with flat design



Plate fasteners

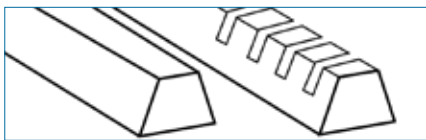
	Product type	Thickness (mm)	Length of hook (mm)	Min. Pulley-Ø (mm)
Hooks with round design	1355-UX1SPS24	2-3	600	50
	1356-UX1S24	3-4	600	50
	1231-U3-2S12	4-4.8	300	25
Plate fasteners	4546-RS125SJ60SS	3.2-4.8	1500	70
	4612-RS187SJ60SS	4.8-6.4	1500	90

PROFILES V GUIDES & CLEATS

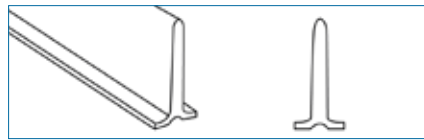
PVC & PU guides

INO process and conveyor belts can be equipped with profiles as driving cogs or

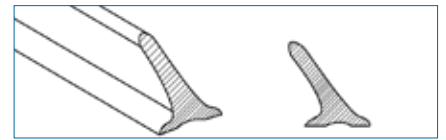
guide strips. The thermoplastic profiles are welded directly to the belt surface.



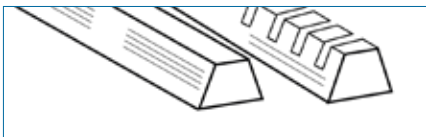
PVC K type



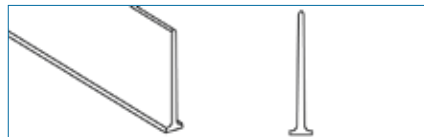
PVC cleat T type



PVC cleat TN type



PU K type



PU cleat T type

	Product type	Material	Hardness (°Shore A)	Technical Data			Color	Applications										
				Length per unit (m)	Weight / m (g)	Base width (mm)		Possible in Food applications	Application as cleat	Application as guide top side	Application as guide bottom side (notched version)	Min. pulley-Ø (as cleat)	Min. pulley-Ø (as guide bottom side)	Min. pulley-Ø (as guide top side)				
PVC-profiles I v-guides	PVC-K5 x 3	PVC	65-70	500	19	-												
	PVC-K6 x 4	PVC	65-70	500	27	-	□ ■ ■ ■ ■ ■ ■ ■	Yes	Yes	Yes	Yes	24	28	48				
	PVC-K8 x 5	PVC	65-70	500	35	-	□ ■ ■ ■ ■ ■ ■ ■	Yes	Yes	Yes	Yes	30	35	60				
	PVC-K10 x 6	PVC	65-70	400	62	-	□ ■ ■ ■ ■ ■ ■ ■	Yes	Yes	Yes	Yes	36	42	72				
	PVC-K13 x 8	PVC	65-70	250	117	-	□ ■ ■ ■ ■ ■ ■ ■	Yes	Yes	Yes	Yes	48	56	96				
	PVC-K17 x 11	PVC	65-70	150	193	-	□ ■ ■ ■ ■ ■ ■ ■	Yes	Yes	Yes	Yes	66	87	132				
	PVC-K22 x 14	PVC	65-70	100	275	-	□ ■ ■ ■ ■ ■ ■ ■	Yes	Yes	Yes	Yes	120	150	180				
	PVC-K30 x 16	PVC	65-70	50	586	-	□ ■ ■ ■ ■ ■ ■ ■	Yes	Yes	Yes	Yes	-	160	200				
	PVC-K10 x 10	PVC	65-70	250	152	-	□ ■ ■ ■ ■ ■ ■ ■	Yes	Yes	Yes	Yes	-	60	100				
	PVC-K15 x 15	PVC	65-70	150	345	-	□ ■ ■ ■ ■ ■ ■ ■	Yes	Yes	Yes	Yes	-	100	140				
	PVC-K22 x 22	PVC	65-70	50	725	-	□ ■ ■ ■ ■ ■ ■ ■	Yes	Yes	Yes	Yes	-	150	180				
PVC-profiles I cleats	PVC Cleat T-20	PVC	80	2	200	20	□ ■ ■ ■ ■ ■ ■ ■	Yes	Yes	No	No	40	-	-				
	PVC Cleat T-30	PVC	80	2	350	25	□ ■ ■ ■ ■ ■ ■ ■	Yes	Yes	No	No	60	-	-				
	PVC Cleat T-40	PVC	80	2	450	25	□ ■ ■ ■ ■ ■ ■ ■	Yes	Yes	No	No	60	-	-				
	PVC Cleat T-50	PVC	80	2	550	30	□ ■ ■ ■ ■ ■ ■ ■	Yes	Yes	No	No	80	-	-				
	PVC Cleat T-60	PVC	80	2	600	30	□ ■ ■ ■ ■ ■ ■ ■	Yes	Yes	No	No	80	-	-				
	PVC Cleat T-70	PVC	80	2	1.000	40	□ ■ ■ ■ ■ ■ ■ ■	Yes	Yes	No	No	80	-	-				
	PVC Cleat T-75	PVC	80	2	1.250	45	□ ■ ■ ■ ■ ■ ■ ■	Yes	Yes	No	No	100	-	-				
	PVC Cleat T-80	PVC	80	2	1.300	-	□ ■ ■ ■ ■ ■ ■ ■	Yes	Yes	No	No	100	-	-				
	PVC Cleat T-100	PVC	80	2	1.500	-	□ ■ ■ ■ ■ ■ ■ ■	Yes	Yes	No	No	120	-	-				
	PVC Cleat TN-30	PVC	80	2	380	-	□ ■ ■ ■ ■ ■ ■ ■	Yes	Yes	No	No	60	-	-				
	PVC Cleat TN-50	PVC	80	2	630	-	□ ■ ■ ■ ■ ■ ■ ■	Yes	Yes	No	No	80	-	-				
PVC Cleat TN-75	PVC	80	2	1.300	-	□ ■ ■ ■ ■ ■ ■ ■	Yes	Yes	No	No	100	-	-					
PU-profiles I v-guides	PVC-K6 x 4	PU	85	250	25	-	□ □ ■ ■ ■ ■ ■ ■	Yes	Yes	Yes	No	24	28	48				
	PVC-K8 x 5	PU	85	250	40	-	□ □ ■ ■ ■ ■ ■ ■	Yes	Yes	Yes	No	30	35	60				
	PVC-K10 x 6	PU	85	250	60	-	□ □ ■ ■ ■ ■ ■ ■	Yes	Yes	Yes	No	36	42	72				
	PVC-K13 x 8	PU	85	125	96	-	□ □ ■ ■ ■ ■ ■ ■	Yes	Yes	Yes	No	48	56	96				
	PVC-K17 x 11	PU	85	125	170	-	□ □ ■ ■ ■ ■ ■ ■	Yes	Yes	Yes	No	66	77	132				
PU-profiles I cleats	PU Cleat T-20	PU	85	3	90	8	□ □ ■ ■ ■ ■ ■ ■	Yes	Yes	No	No	40	-	-				
	PU Cleat T-30	PU	85	3	150	8	□ □ ■ ■ ■ ■ ■ ■	Yes	Yes	No	No	40	-	-				
	PU Cleat T-50	PU	85	3	165	9	□ □ ■ ■ ■ ■ ■ ■	Yes	Yes	No	No	40	-	-				
	PU Cleat T-60	PU	85	3	270	12	□ □ ■ ■ ■ ■ ■ ■	Yes	Yes	No	No	40	-	-				

Limitations:

Maximum belt width: 1000 mm (wider belts must be welded twice) Minimum belt length: 1500 mm

Both the profile and the belt must be taken into account for the minimum drum diameter. The higher value is always the decisive factor. Only cleats made of thermoplastics can be applied using high-frequency welding machines. Transverse profiles are generally applied perpendicular to the belt edge. Other arrangements can be made upon request.

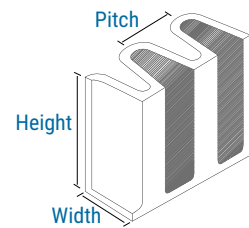
□ = Transparent ■ = Dark green ■ = Black ■ = Apple green
□ = White ■ = Sky blue ■ = Dark blue

CORRUGATED SIDE WALLS

PVC / PU Side walls

Corrugated side walls provide excellent cross rigidity and allow goods to be transported without falling off from the sides.

Materials in various height, pitches and widths are available.



	Product type	Material	Thickness (mm)	Hardness (°Shore A)	Height (mm)	Width (mm)	Pitch (mm)	Color	Min. pulley-Ø (mm)
Technical Data									
PU side walls	WPU 20	PU	1.7	90	20	25	25	□ ■ ■ ■ ■ ■	40
	WPU 30	PU	1.7	90	30	25	25	□ ■ ■ ■ ■ ■	60
	WPU 40	PU	1.7	90	40	25	25	□ ■ ■ ■ ■ ■	80
	WPU 50	PU	1.7	90	50	25	25	□ ■ ■ ■ ■ ■	100
	WPU 60	PU	1.7	90	60	25	25	□ ■ ■ ■ ■ ■	120
	WPU 70	PU	1.7	90	70	50	50	□ ■ ■ ■ ■ ■	175
	WPU 80	PU	1.7	90	80	50	50	□ ■ ■ ■ ■ ■	200
	WPU 90	PU	1.7	90	90	50	50	□ ■ ■ ■ ■ ■	225
	WPU 100	PU	1.7	90	100	50	50	□ ■ ■ ■ ■ ■	250
	WPU 110	PU	1.7	90	110	50	50	□ ■ ■ ■ ■ ■	275
	WPU 120	PU	1.7	90	120	50	50	□ ■ ■ ■ ■ ■	300
	WPU 130	PU	1.7	90	130	50	50	□ ■ ■ ■ ■ ■	325
	WPU 140	PU	1.7	90	140	50	50	□ ■ ■ ■ ■ ■	350
	PVC side walls	WPVC 20	PVC	3	70	20	50	50	□ ■ ■ ■ ■ ■
WPVC 30		PVC	3	70	30	50	50	□ ■ ■ ■ ■ ■	60
WPVC 40		PVC	3	70	40	50	50	□ ■ ■ ■ ■ ■	80
WPVC 50		PVC	3	70	50	50	50	□ ■ ■ ■ ■ ■	100
WPVC 60		PVC	3	70	60	50	50	□ ■ ■ ■ ■ ■	120
WPVC 70		PVC	3	70	70	50	50	□ ■ ■ ■ ■ ■	175
WPVC 80		PVC	3	70	80	50	50	□ ■ ■ ■ ■ ■	200
WPVC 90		PVC	3	70	90	50	50	□ ■ ■ ■ ■ ■	225
WPVC 100		PVC	3	70	100	50	50	□ ■ ■ ■ ■ ■	250

Limitations:
 Minimum belt length: 1700 mm
 Maximum belt width: 1600 mm

Side walls are supplied without a foot as standard.
 On request, these are also available with a foot.

- = Apple green
- = Sky blue
- = White
- = Dark green
- = Dark blue



INO Belt Process and Conveyor Belts are represented by



INO Industrial Belting Co. Ltd
China Office
No. 580 Xiang Yin Rd
Shanghai, China 200433

T + 86 (21) 6533 / 2222
F + 86 (21) 6534 / 6100
@-Mail: info@inobelts.com
<http://www.inobelts.com>

The information provided in this brochure contains a general description of the performance characteristics of the products concerned. The actual products may not always have these characteristics as described and, in particular, these may change as a result of further

developments of the products. The provision of this information is not intended to have and will not have legal effect. An obligation to deliver products having particular characteristics shall only exist if expressed agreed in the terms of the contract.